

**AH:** Original, old wood with a surface full of character, pronounced and very strong wood appearance, sound and black knots possible, knotholes are filled with natural knot plugs, small unfilled parts possible, resin pockets possible. Contrasting colour variations, worm holes, shakes, nail holes, mechanical damages, major color differences and inlets are a valued feature. Lamellas are jointfree placed.

**Bottom layer AH:** as above. (AH) **Bottom layer CG+:** Spruce steamed, no special quality specifications, filled surface.

This panel is also available with sauna-suitable gluing and fulfils the formaldehyde emission requirements in accordance with ÖNORM M 6219-1:2010. Especially when used in saunas, attention must be paid to the possibility of occasional resin leakage and shedding. The maximum permissible temperature of 105°C must not be exceeded, even locally (e.g. near the oven). Where necessary, conformity with ÖNorm M 6219 or the respective other national or local requirements must be ensured by the planning/executing company. Please also refer to our data sheet „Use in saunas“.



Grading	Thickness mm approx.	Length mm (Width 2030 mm)	Top layer thckn. mm approx.	Top layer width mm	Middle layer (subject to availability)	Packaging pieces/palett
AH/CG+ (suitable for sauna use)	19	2100-4000 (suitable for sauna use)	5	Mix	SML/BML Spruce	30
AH/AH	19	2100-4000 (suitable for sauna use)	5	Mix		30

The panels are SWP/2 non structural (NS) glued: solid wood panels for non-structural use in wet areas, with regard to appropriate constructional protection also suitable for exterior use (sheltered areas). Legend: SML = strip core, BML = board middle layer. More information concerning fire classification in the accompanying information to CE-marking.

Technical information					
More information (for example concerning fire classification) in the accompanying information to CE-marking at <a href="http://www.admonter.com/en/downloads/">http://www.admonter.com/en/downloads/</a>					
Type of wood	Thickness (mm)	Middle layer	Weight [kg/m <sup>2</sup> ]	Moisture content [%]	Lambda [W/m K]
Reclaimed wood	19	Spruce	8,8	8+/-2	0,12

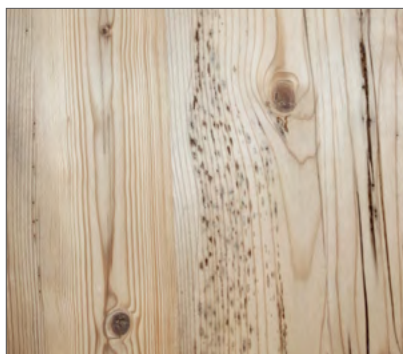
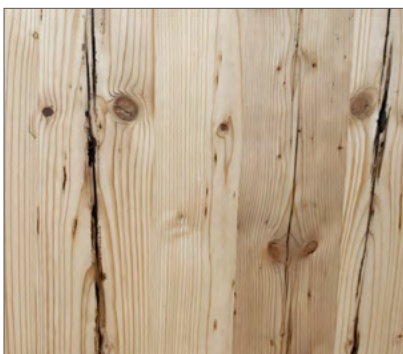
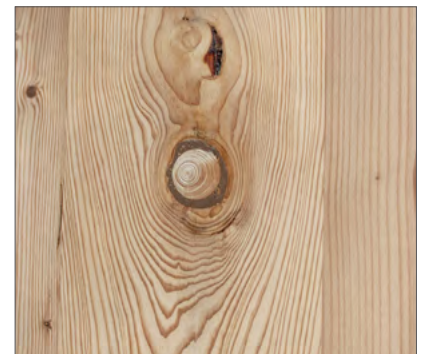
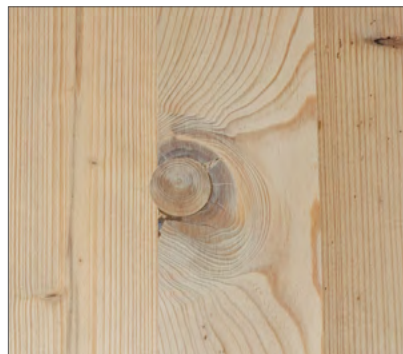
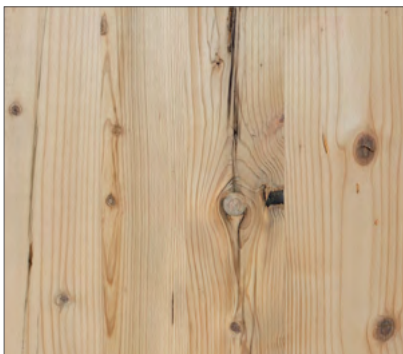


# Reclaimed wood

brown fillers

# Admonter

Wooden panels







Features wooden panels Elements	Benefit
Standard-width 2030 mm for ALL ELEMENTS	Simple stock-keeping (no short lengths: e.g. reclaimed wood) Calculation of offcuts / less articles by product group -> more comprehensive
Choice of countless wood species – in particular reclaimed wood	Wide range of options for customized products, tailored to customer benefits / requirements. The right surface for every customer and area of application / living situation.
Different texture options and colours	
Also available for sauna use	
A wide range of construction variants	The right product for every application.
Service programme – cutting to size and simple edge processing and milling work, as well as surface treatment and application of different textures	Capacity balancing in the event of overload of the processor's production / possibility to buy ready-to-assemble furniture parts

